

C O N T E N T S



MILAN DESIGN EXPLOSION 68



ZEN AND THE CITY 94
WINKA DUBBELDAM
IN NEW YORK CITY

PULLMAN KAIFENG JIANYE 100
ARCHITECT H.L.LIM

AXEL VERVOORDT RETURNS 110
TO PALAZZO FORTUNY

PAOLA LENTI'S 118
ARTISTIC ENERGY

SUZANNE LOGGERE 124
AT GOOILUST

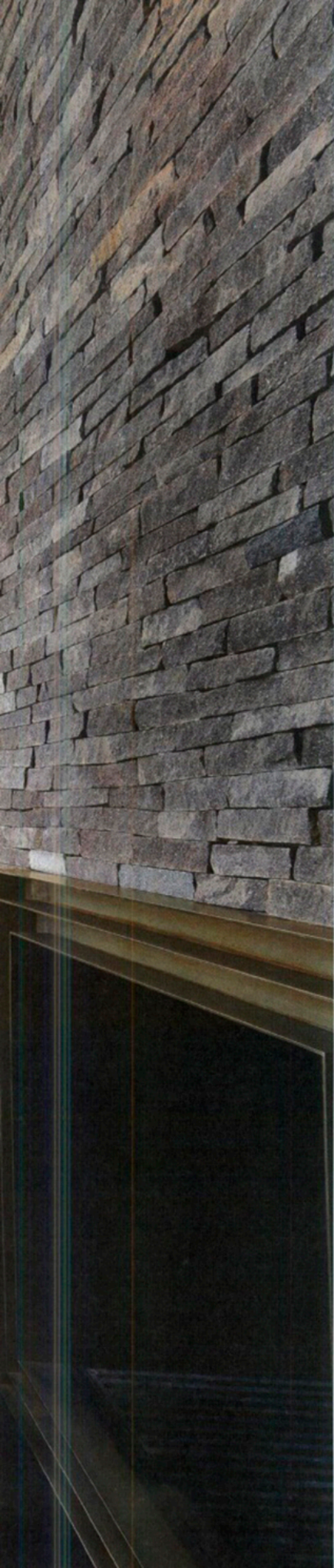
CHATEAU BOLENSTEIN 132

AN ITALIAN 142
IN AMSTERDAM

ITALIAN TOP CHEFS 150
GO WILD ON SOCCER GRASS

CONTACT 152
SUBSCRIPTION
INFORMATION





PAOLA LENTI'S ARTISTIC ENERGY



"The simplicity of the forms and their chromatic hues have become narrative material, metaphorical language. The artistic energy that ascends from the furniture, capable of melting substance and vision, reveals the very essence of reality and returns it to the world."

Paula Lenti on the occasion of Milan International Design Week, where she presented her new creations in a new venue in via Orobica, Milano, an old and fascinating production site dating back to the last century. Wolterinck Design studio showed how boundaries dissolve between the enclosed and the open, between the inside and the outside.

production:
OBJEKT-International
photos: Hans Fonk

Right: the garden house at Marcel Wolterinck Studio in the characteristic small Dutch village of Laren. Here, the latest creations by Paola Lenti were on show. Lamps by Bohemia Machine, wall cabinet by Meridiani, and artworks by Huub and Adelheid Kortekaas.

Far right: Paola Lenti, the woman who started the company with the same name in 1994 together with her mother.





Above: the garden setting with Paola Lenti furniture at Wolterinck's. The artwork is by Martine Demal.

Beside that: one of the high-ceilinged rooms containing the latest creations by Paola and long time designer Francesco Rota.

Lamps are by Henge and mirror is by Promemoria.

The art in the foreground is by Carolien van der Heijden.

Bottom right: designer Francesco Rota.

Paola Lenti is best known for her unique furniture and rugs for indoor and outdoor use crafted from wool felt. The brand has become synonymous with extensive research and development into materials and processes adopted for their originality, beauty and practicality. This has made it a reference point for textile innovation in the design world.

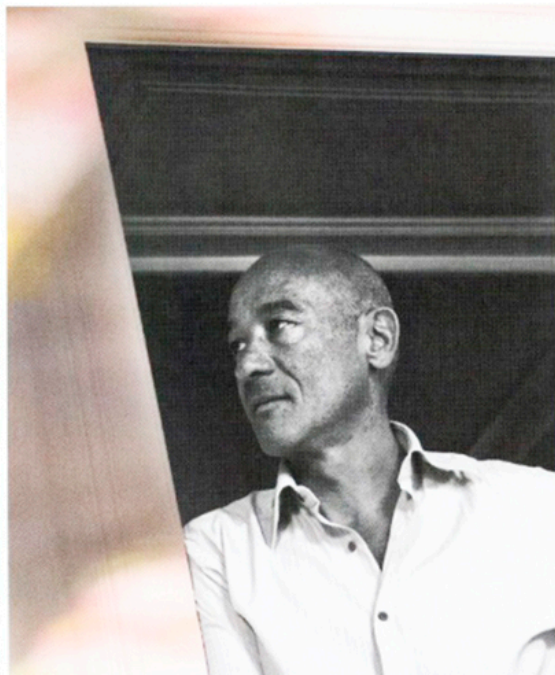
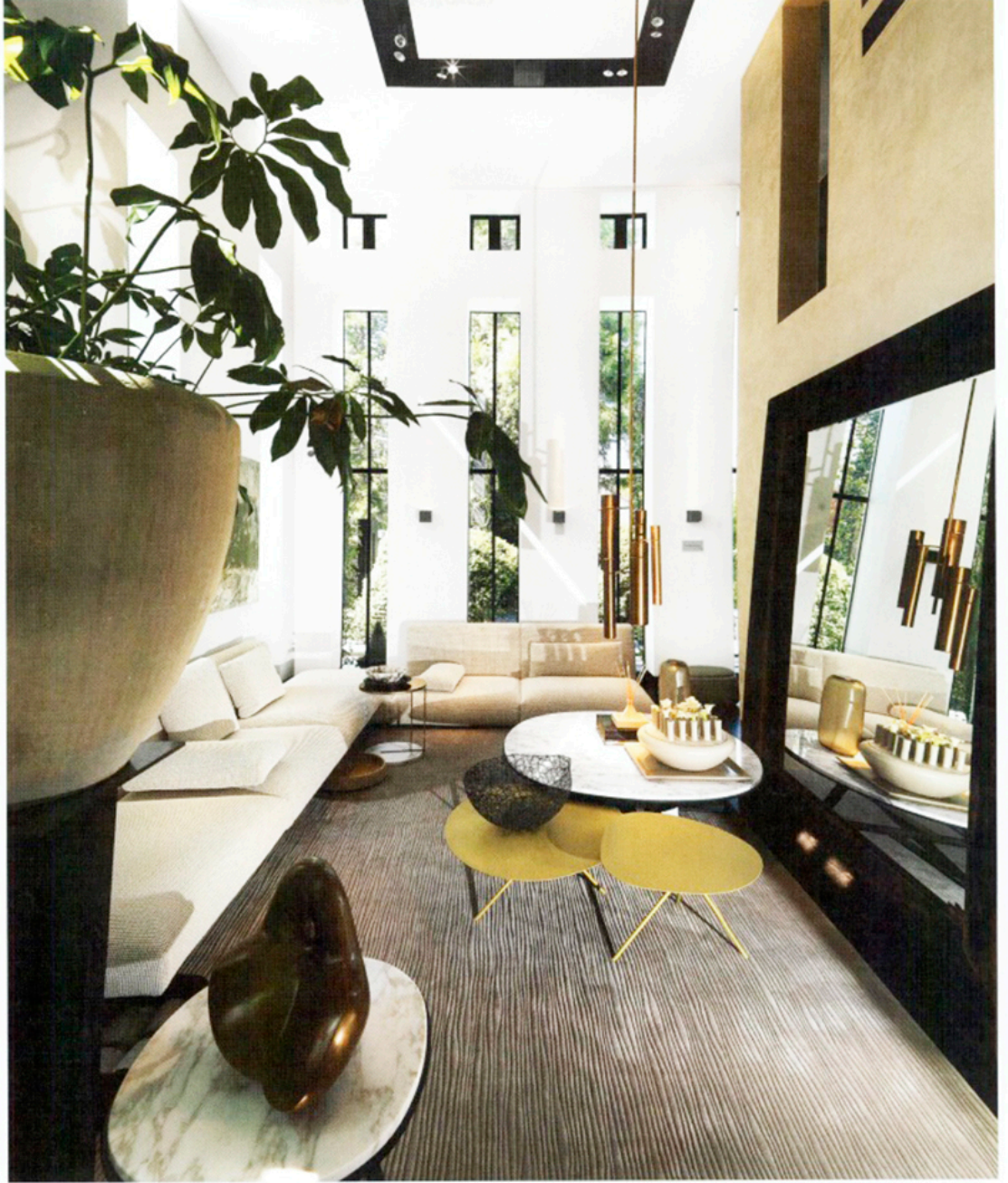
OBJEKT International met Anna Lenti, who has been working since 2000 closely together with her sister Paola and the long-time designer Francesco Rota.

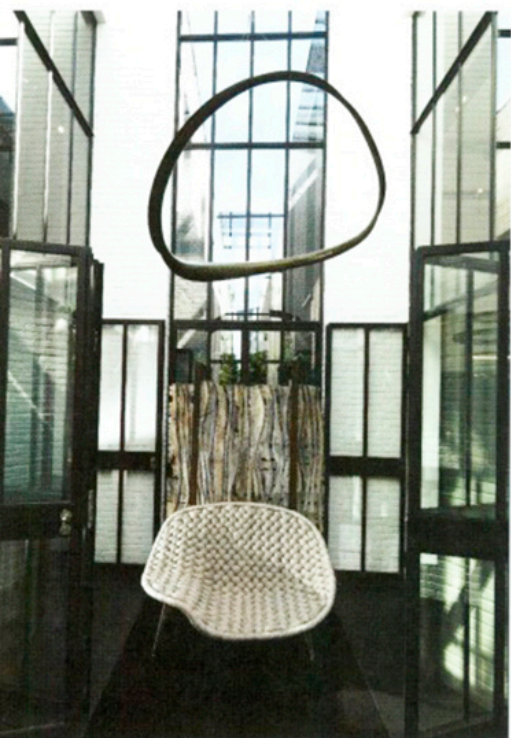
Anna: "Paola is really the creative component, all other parts we share. We have our own role in the company, but we listen to each other very carefully. We want to create long lasting and timeless products for indoors and outdoors that are not over-designed and that create an environment with a good feeling."

She continued: "When designing, we start from the

materials themselves. Ninety-five per cent of our work is with specialized fabric manufacturers in Italy who are open to different, and invariably difficult things. They are technically very good and willing to adjust their looms to our specific wants. It is a complicated and demanding process, but is it rewarding. Also in terms of colors, we always try to go to the absolute limits. Yes, we go our own way. Do not look at what other brands are doing. That makes us unique."

Since the very beginning of the company, Paola has worked closely together with Francesco Rota. Their collaboration has resulted in collections with a subdued chic and a distinctive presence in the market. Paola's approach can be characterized by her reply to the question what for her is essential in an outdoor space. The reply, quite simply: 'a tree'. "That is how we think. Our products have to disappear in nature."





Above: the entrance of Wolterinck Studio in the Dutch village of Laren. The artwork behind the Paola Lenti chair is by Frans Polman and the hanging artwork is by Elie Hirsch. Above: the entrance of Wolterinck Studio in the Dutch village of Laren. The artwork behind the Paola Lenti chair is by Frans Polman and the hanging artwork is by Elie Hirsch. Beside that: a room at Wolterinck's with Paola Lenti furniture and lamps by Henge.

The artworks on the fireplace are by Joseph Cals and Elie Hirsch. The black art piece is by Frans Polman.

Right: Marcel Wolterinck, the creative director and co-owner of Wolterinck Studio, and Karin Bissehop, commercial director and co-owner.



At the Milan presentation, she added: "We created rooms without doors, opening into pathways that disclose weaves originating from imagination and accuracy, and brought about aesthetically. It is the story of different levels of reality, a new composition of plots, intersections, variations and overlaps in a constant search for beauty, which dwells only in interplay. It is essential to combine imagination with life."

Recently she presented her creations at Wolterinck, a key reference point for contemporary design in the Netherlands. They have worked together for ten years: a relationship based on mutual trust and on cooperation in the search of beauty.

The Wolterinck showroom in Laren hosted Paola Lenti projects for indoors and outdoors, venturing for the first time into colors which are unusual for the Dutch market, letting fantasy and emotion roam freely, to create exclusive, well-finished spaces.

