



Lindye Galloway Studio



## READ THE ROOM

TWO INTERIOR DESIGNERS SHARE THEIR CREATIVE PROCESS.

WRITTEN BY CLÉMENCE SFADJ

**Lindye Galloway** For her own kitchen, Orange County-based designer and LUXE Next In Design 99 talent Lindye Galloway channeled old-world European design with a SoCal twist.

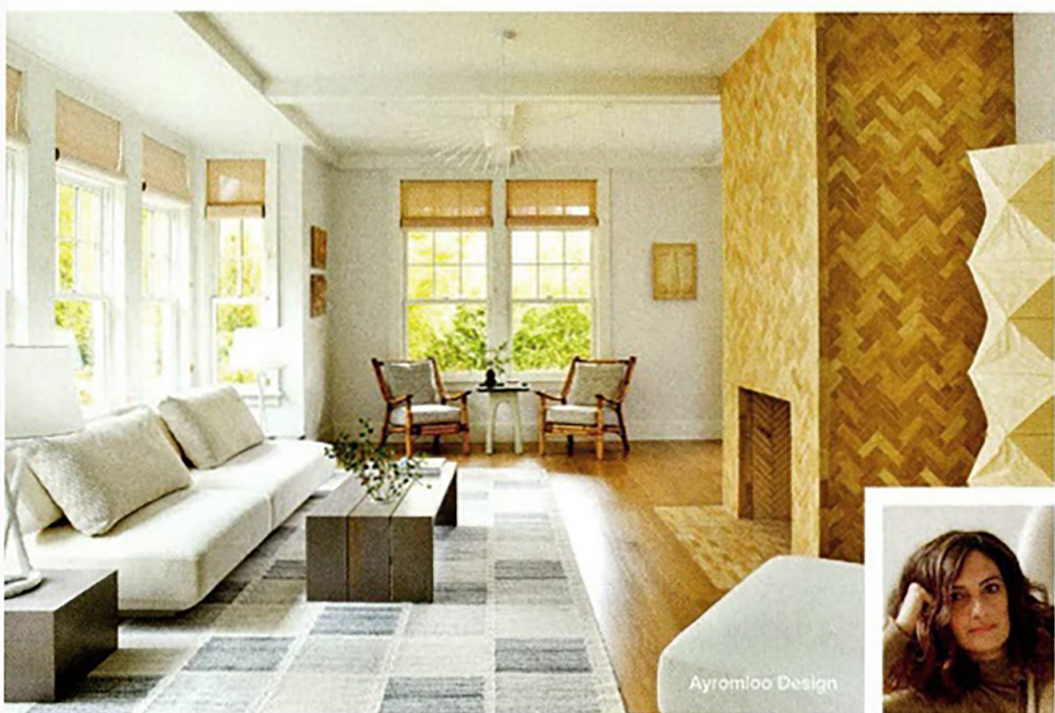
**The inspo:** This kitchen captures my design ethos—infusing minimalist accents with refined luxury. **The stars:** One of the best parts of renovating our home was utilizing furniture I personally designed: the stools, for instance, are our Ophelia Counter Stools from Lindye Galloway Shop. The pendants are by Naomi Paul. **The palette:** To bring together West Coast style and Spanish charm, I chose warm neutrals with a detailed tile, unlacquered brass and Calacatta Vagli marble. Kitchens are the heart of the home. Soften your color palette and infuse them with elements that will inspire you daily. [@lindyegalloway](#)

**Jessica Ayromloo** L.A.-based LUXE Next In Design 99 honoree Jessica Ayromloo designed a longtime client's Southampton home down to the architectural details. **The inspo:** The homeowner is very laid-back and doesn't like a lot of fuss, so we kept things light and minimal with understated design moments. **The stars:** The fireplace is one of my favorite elements. I wanted its material to evoke a deconstructed and natural feeling, and found this unfired terra cotta from clé. The sofa is Paola Lenti and the vintage rattan chairs are from Harbinger.

**The palette:** This room feels layered in a balanced way. When designing a space, you have to decide on the feeling you want to evoke. Then, you can determine what colors, textures and shapes best define your intention. [@ayromloo.design](#)



See our Next In Design 99



Ayromloo Design



## TILE FILES

### ZIA TILE'S CASE STUDY COLLECTION

One of California's most enduring legacies is its Case Study House Program, which engaged architects to explore affordable housing concepts for the postwar era. While it never reached mass production as originally intended, it did help spread California's unique response to modernism (especially the concept of indoor-outdoor living) across the globe. Now, these experimental homes in Los Angeles—which include the Eames House in the Palisades and the Stahl House in the Hollywood Hills—have inspired a new collection from Zia Tile. This isn't the first time the company, which has done collections with local designers Justina Blakeney and Amber Lewis, has found inspiration right at home. But The Case Study Collection puts L.A. design history itself on center stage, with 10 cement designs that span curved and geometric patterns as well as solids, all in a variety of shapes and sizes. The line boasts colorways channeling a midcentury palette, including Pompeii, a brick red; Rust, a burnt orange; and Elemental Blue, a nod to Yves Klein's eponymous hue. [ziatile.com](#)

