



QUADERNI PAOLA LENTI

#4

ROPE

20
22

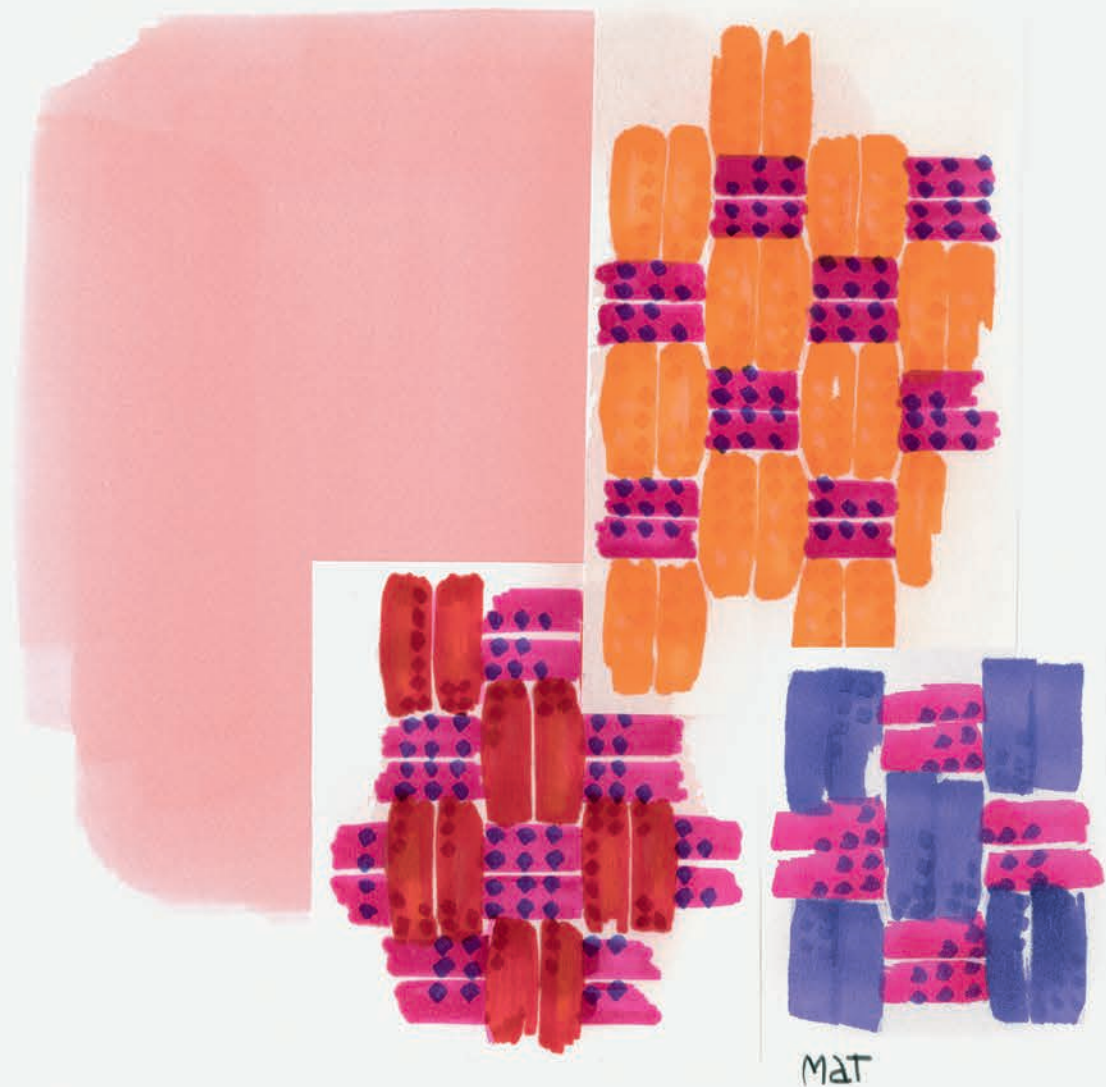
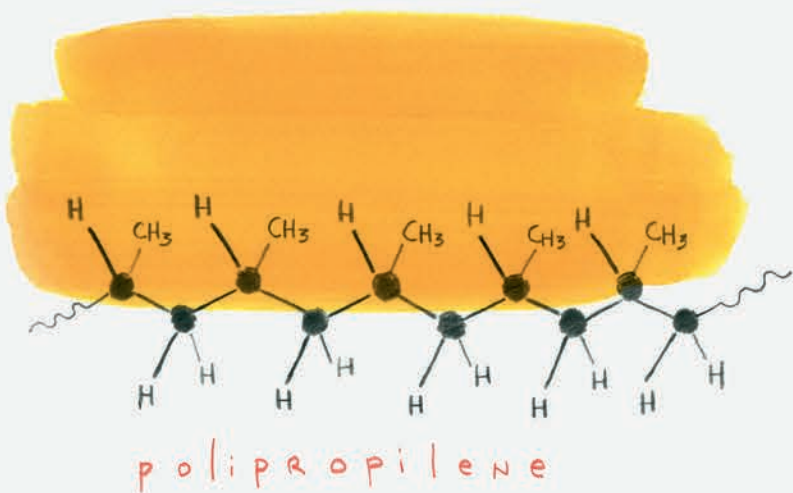


QUADERNI PAOLA LENTI	#4
ROPE	20 22

storia di un filo rivoluzionario
a revolutionary yarn

Poco più di vent'anni fa abbiamo iniziato a progettare una innovativa collezione di arredi per esterni: l'idea ispiratrice era quella di una casa in cui gli spazi all'aperto diventassero parte integrante della vita quotidiana, animati da oggetti amichevoli, belli e confortevoli. All'epoca, i 'mobili da giardino' erano costruiti in midollino, legno, metallo o materiali plastici. Molti erano anonimi; altri, invece, particolarmente riusciti grazie agli interventi pionieristici di alcuni designer. Ma non erano stati progettati per resistere a lungo alle intemperie, o per essere davvero comodi.

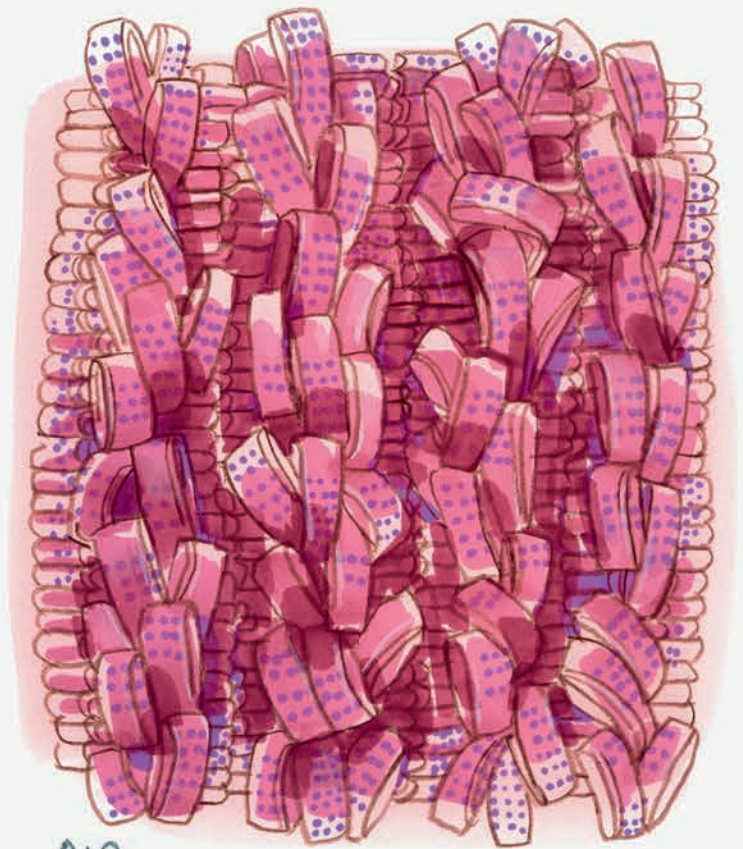
We began to plan a new outdoor furniture collection a little over twenty years ago with the vision of a house where the outdoor spaces would become an integral part of everyday life, brightened up by aesthetically pleasing, comfortable furniture. At the time, "garden furniture" was made of wicker, wood, metal or plastic. Much of it was anonymous even though there were some outstanding pieces made by pioneering designers but not, unfortunately, designed to be weatherproof or even particularly comfortable.



2002

shell



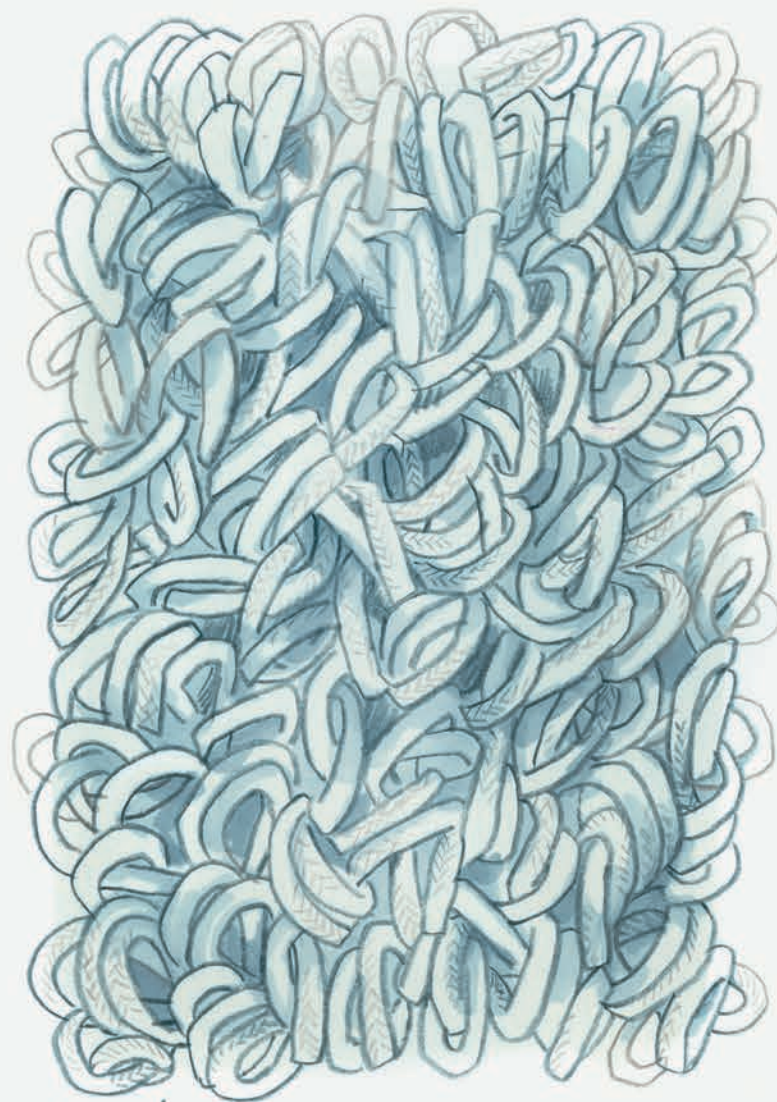


AIR

2003



Wave



wind

2004



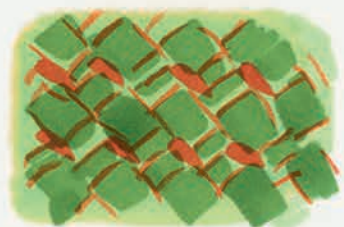
Island



SAND



SURF



CROCHET

TRECCIA ROPE

2005

FRAME



FRAME



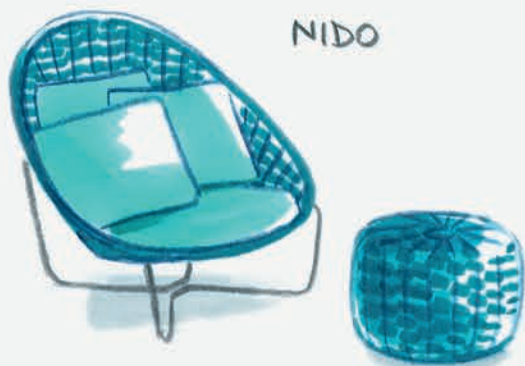
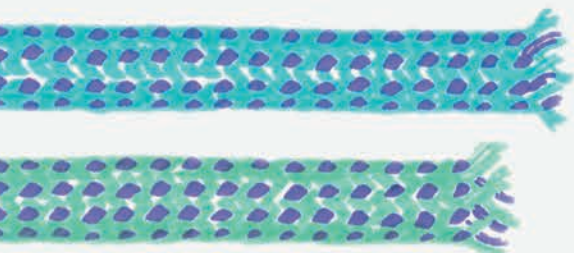
FRAME



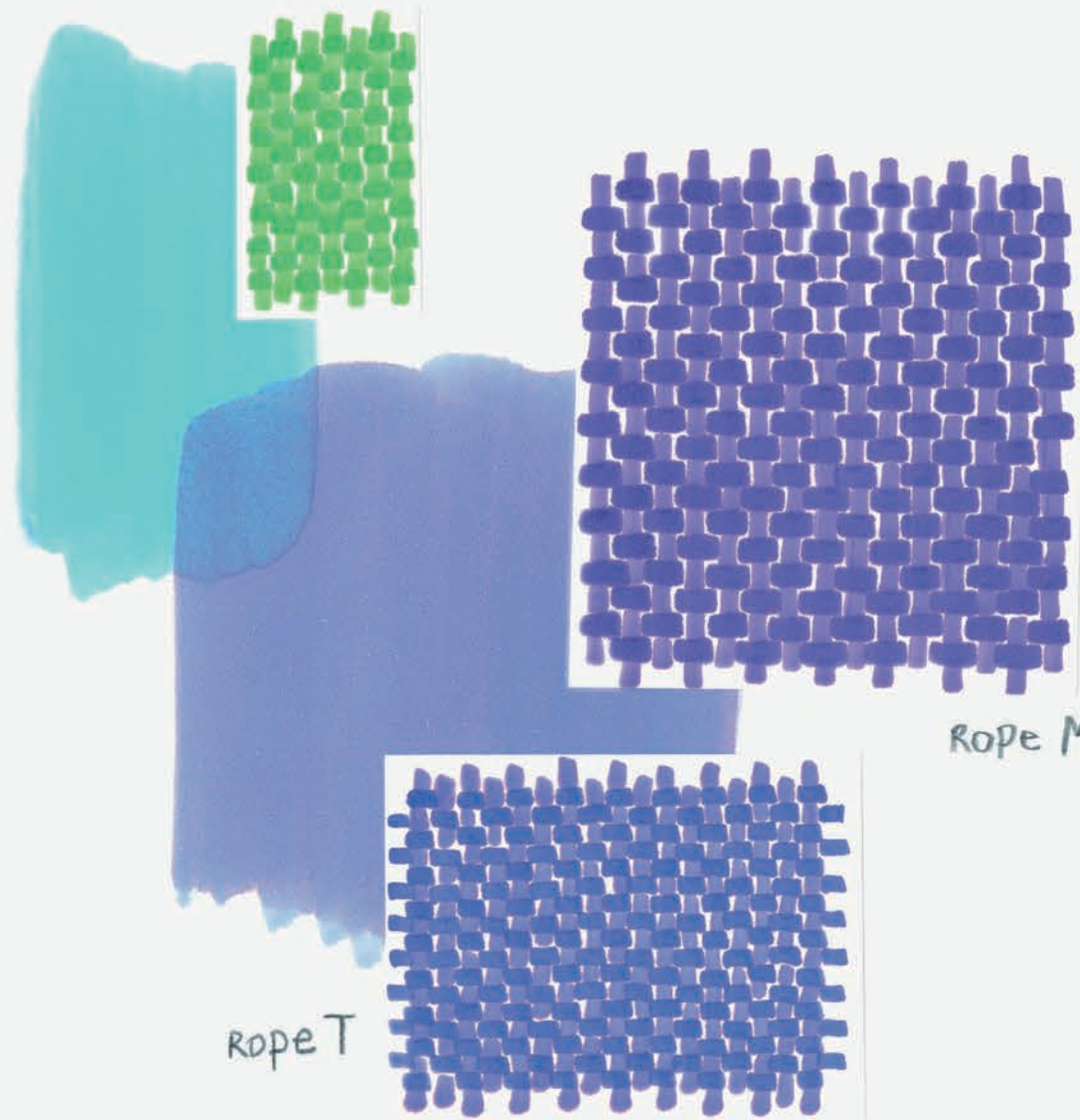
Per arrivare a ideare mobili durevoli e accattivanti, piacevoli al tatto e di facile manutenzione, dotati delle medesime peculiarità estetiche e sensoriali degli arredi per interni, era necessaria un'innovazione. Bisognava partire dall'origine, cioè individuare, sperimentare e sviluppare un filato che permettesse di dare vita a nuovi tessuti.

Some thinking outside the box was needed to create robust, low maintenance, tactile-friendly items that would incorporate the same aesthetic and sensory features as indoor furnishings. We decided to start from the beginning, that is, the identification, experimentation, down to the development of a yarn that would allow us to design new fabrics.

CORDA ROPE



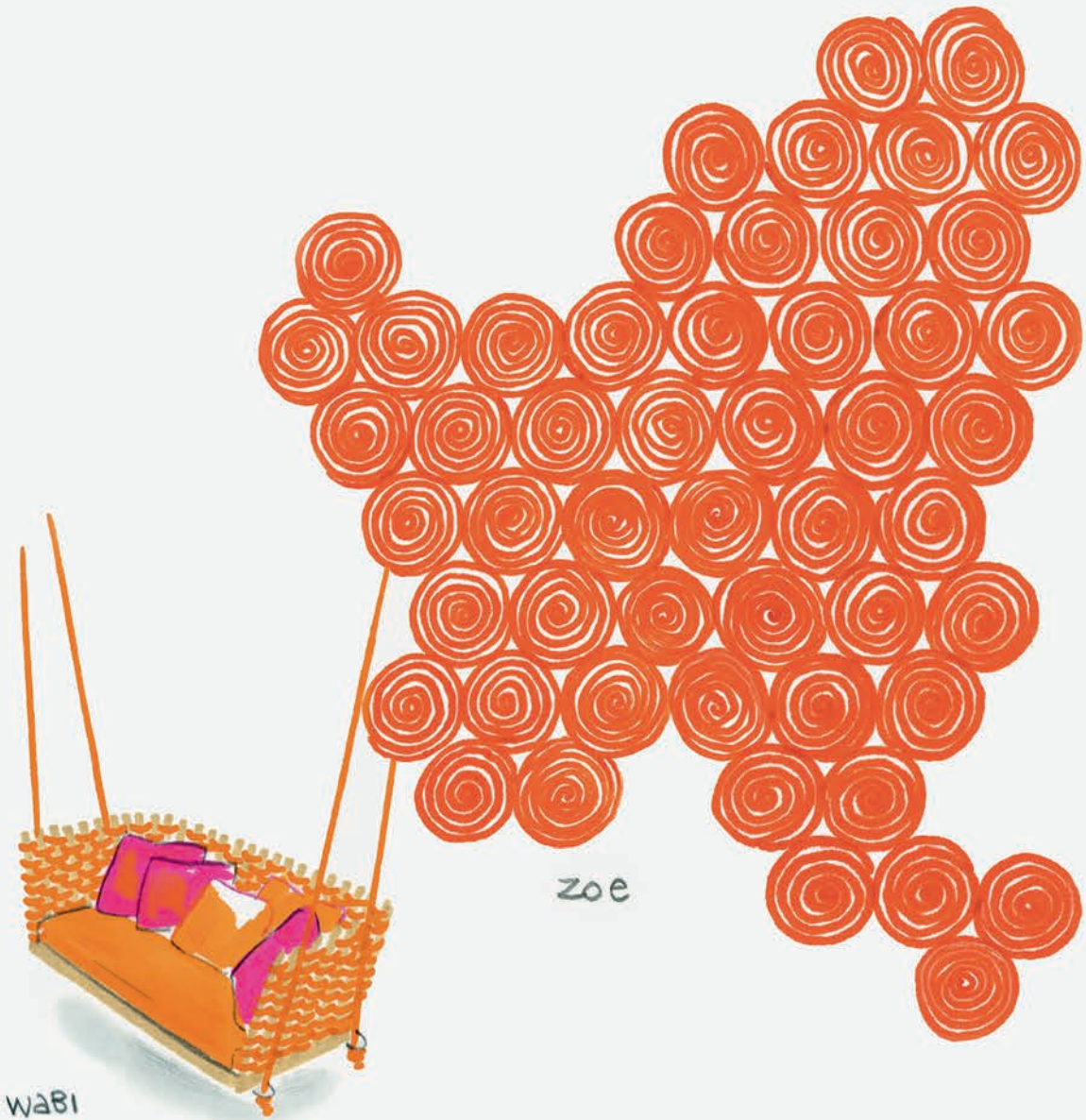
2006





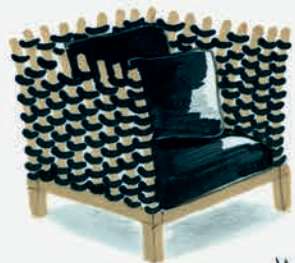
zoe

2008

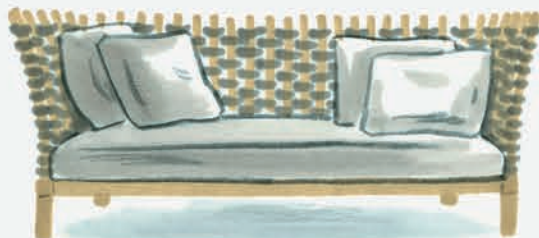


zoe

wabi



wabi



zoe



shang



CORDA SAMO



SABI

2009



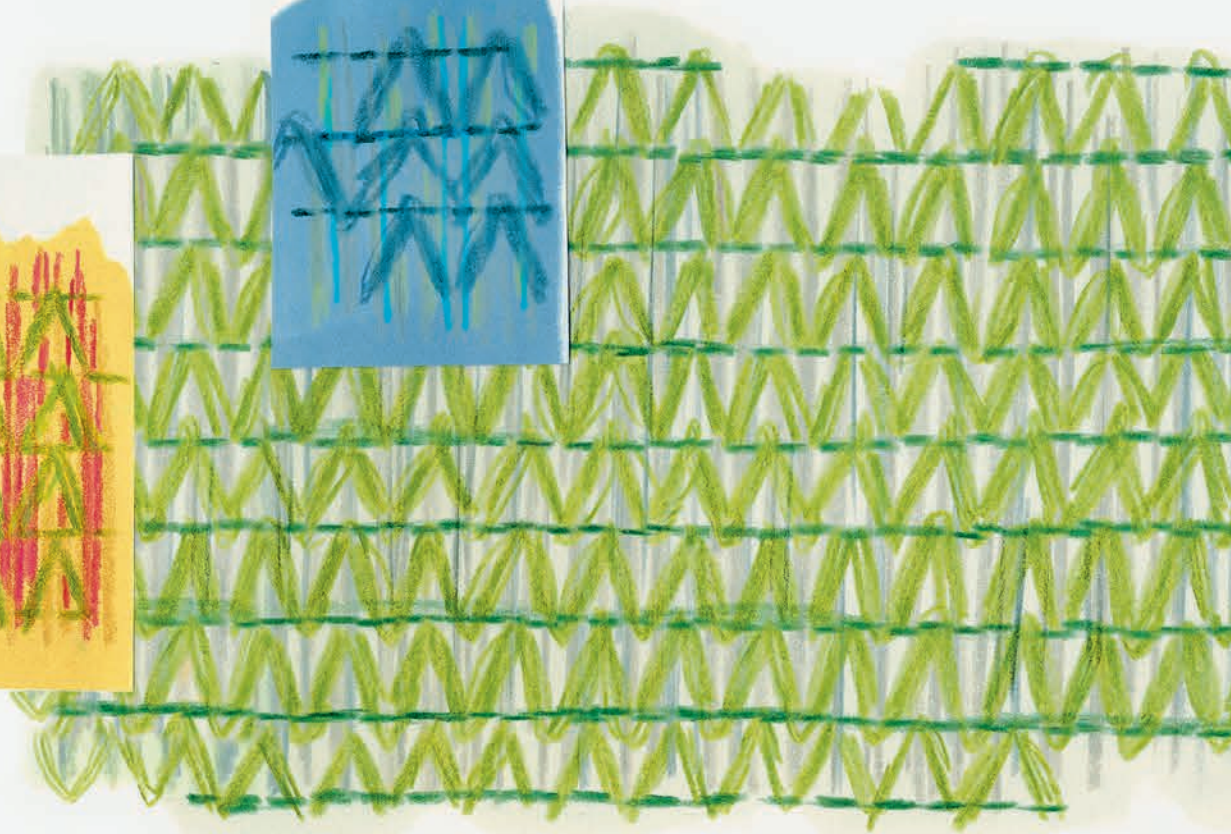
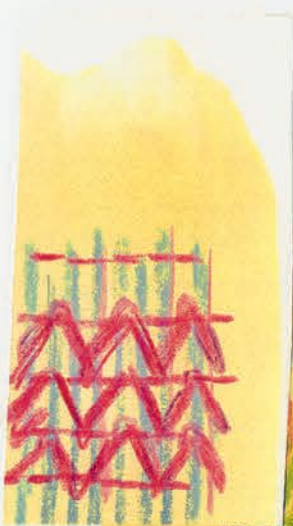
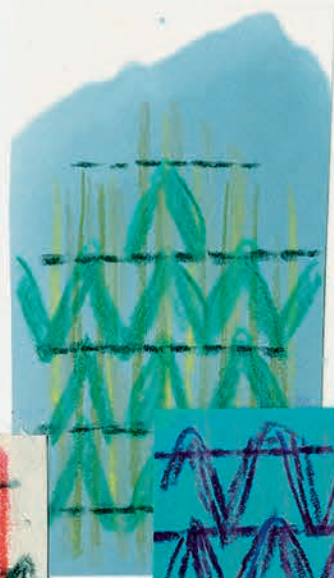
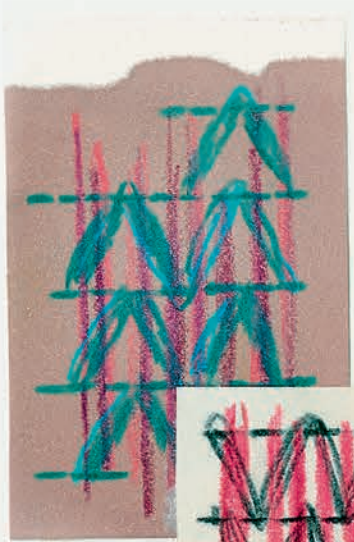
AFRA



SABI



AMI

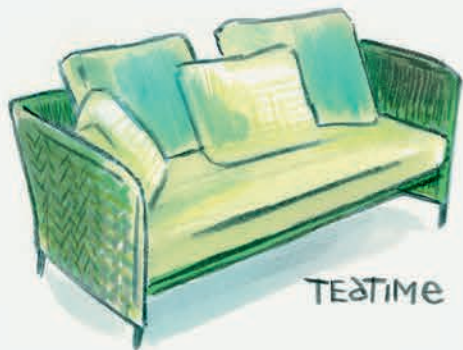


HERON

2011

THUIA

2010



TEATIME



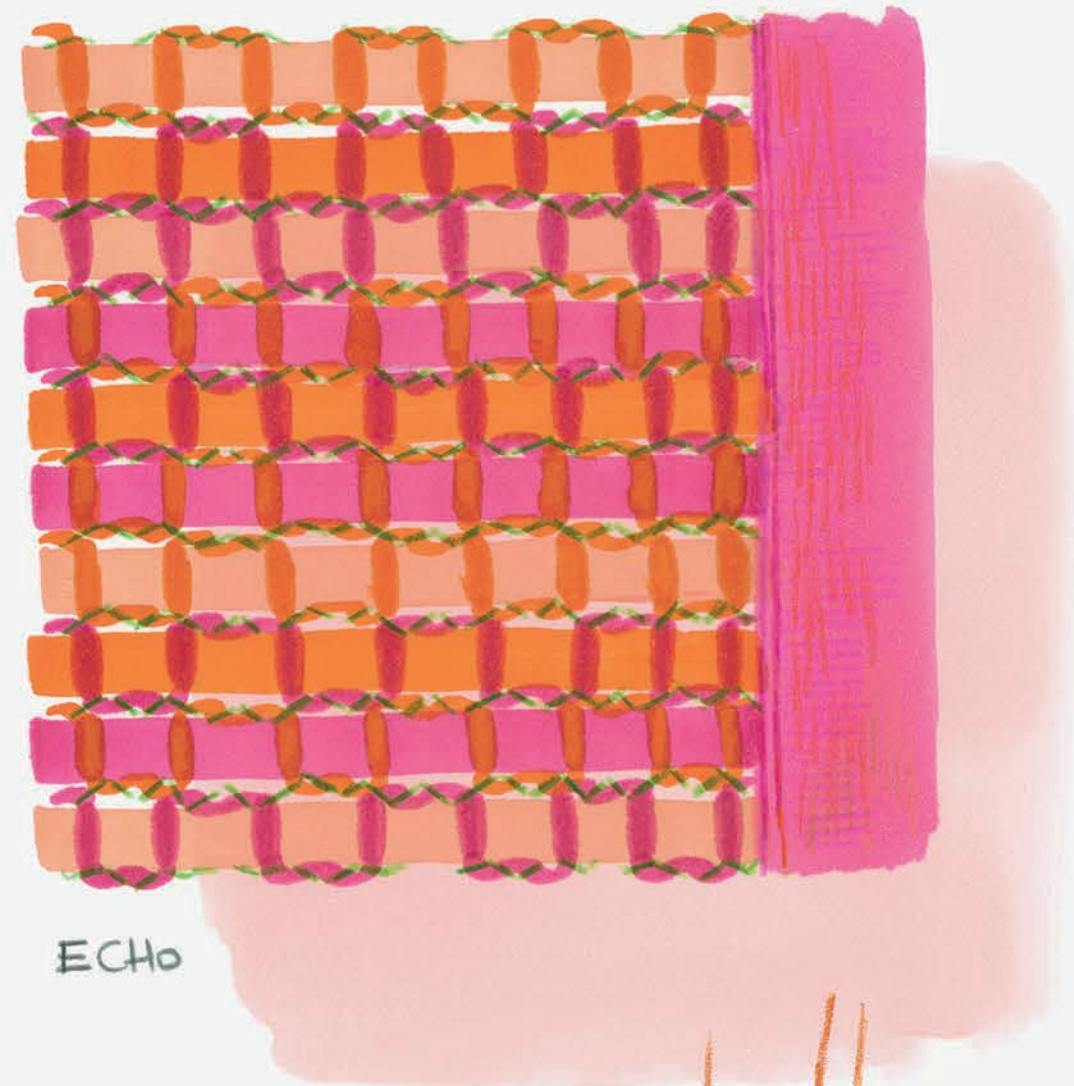
KITI

ROPE, filato sintetico dalle qualità eccellenti, nasce da questa rivoluzione. Leggero, non permeabile, inattaccabile da muffe e batteri, resistente all'abrasione, all'acqua di mare e al cloro delle piscine, anallergico e completamente riciclabile, è progettato per vivere in esterni e rivestire arredi per terrazzi, verande, giardini e parchi. Dopo averlo studiato, messo a punto e reso adatto all'uso, lo abbiamo tessuto e intrecciato in mille modi, ideando e producendo corde, tappeti, stringhe, reti, stuoie, strutture e armature tessili.

ROPE, a very high-quality synthetic yarn was created from this revolutionary idea. Light, impermeable, resistant to mould, bacteria, abrasion, seawater and swimming pool chlorine, hypoallergenic and completely recyclable, it was designed for the outdoors to cover furnishings for terraces, verandas, gardens and parks. After developing it and making it fit for use, we wove and intertwined it in a thousand different ways, creating and producing fabrics, ropes, rugs, laces, netting, matting, fabric structures and reinforcements.



2012



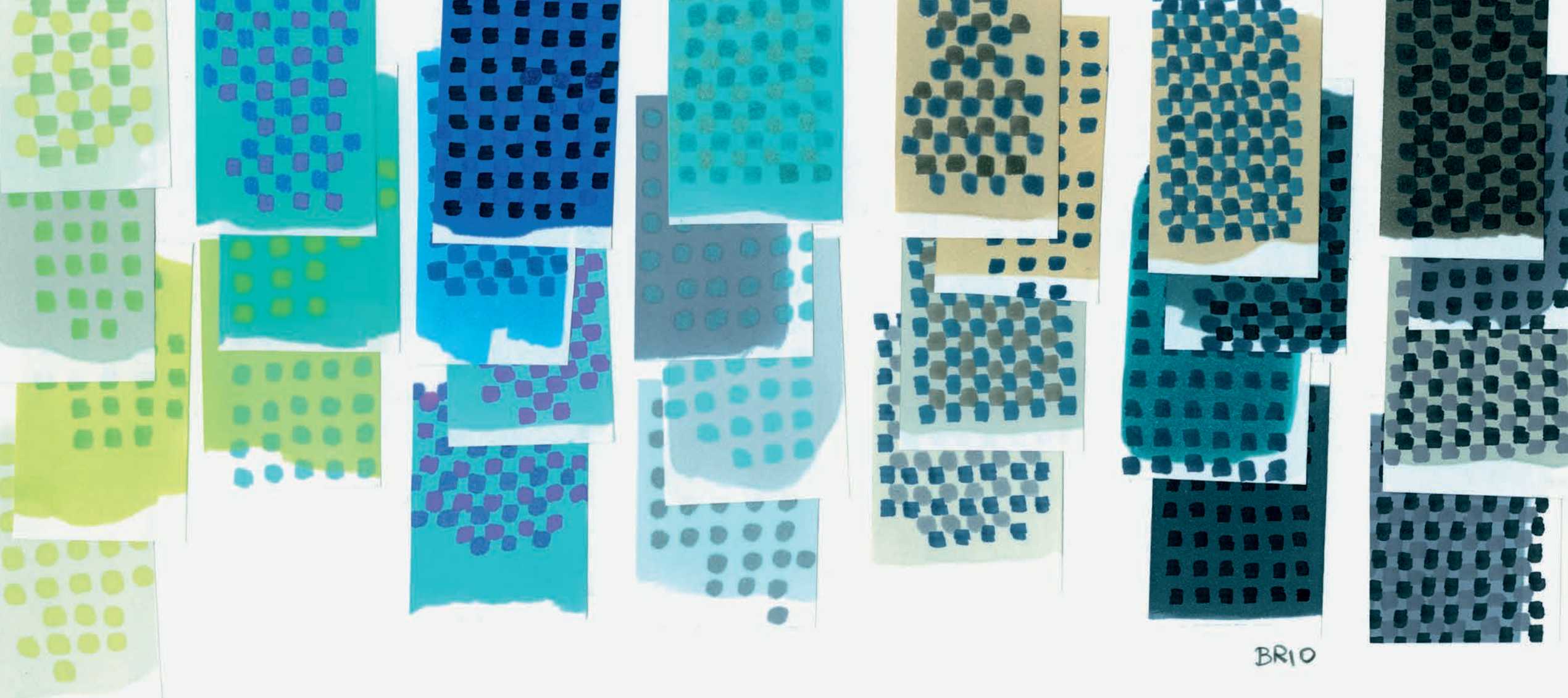
OTTO



welcome

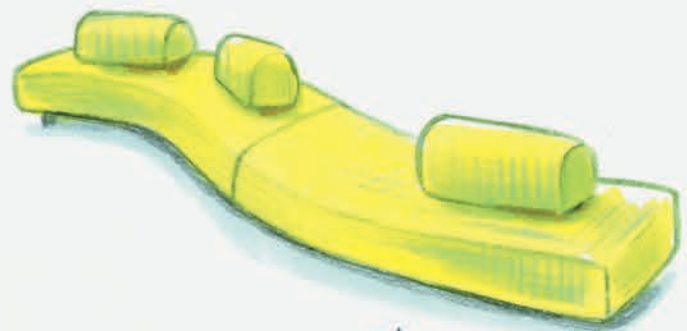


ADAGIO

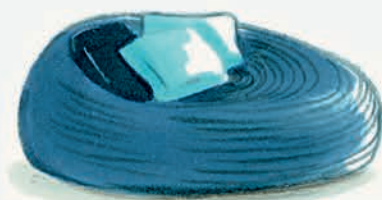


BRIO

2013



ORLANDO

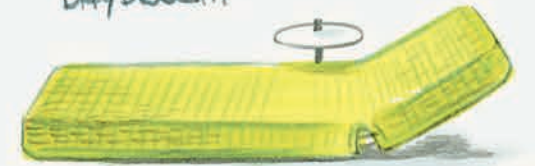


OTTO



AGADIR

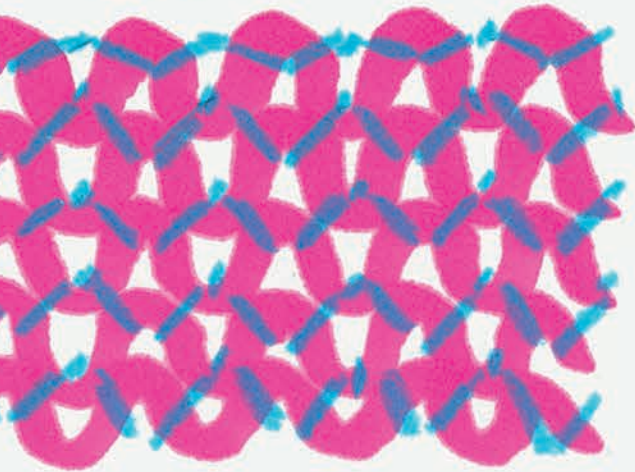
DAYDREAM



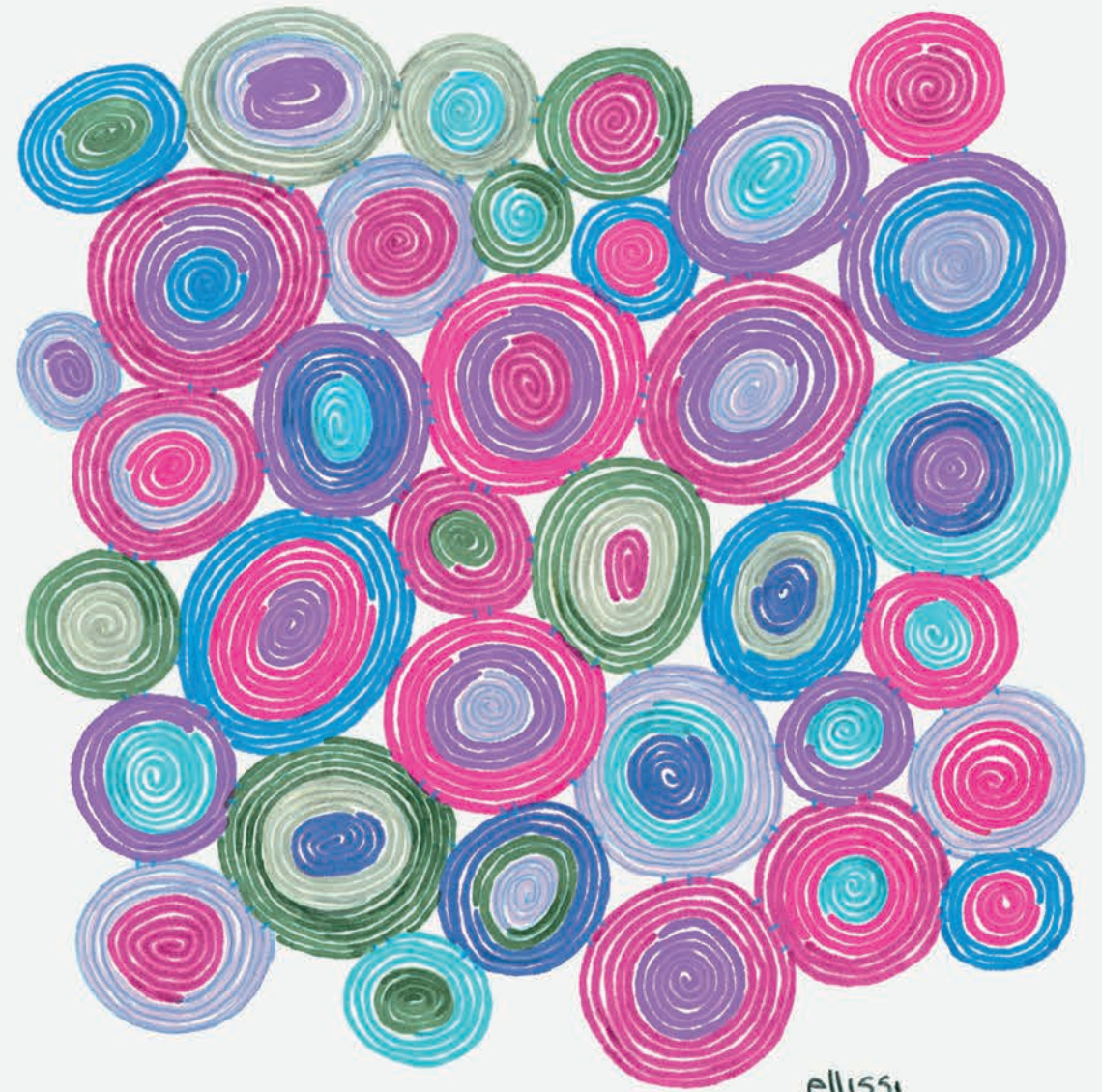
Grazie all'aspetto tessile e alle prerogative tecniche che lo contraddistinguono, il filato ROPE ha cambiato il nostro modo di considerare l'arredamento per esterni. Molti hanno cercato di riprodurlo con le stesse caratteristiche ma, ancora oggi, le sue doti rimangono inimitabili e uniche.

ROPE yarn has changed our way of thinking about outdoor furniture since it looks like a textile but is technically adapted to open-air living. Many have tried to reproduce it but its qualities are still unique.

2010



MOGAMBO



ellissi

2015

2014



smile

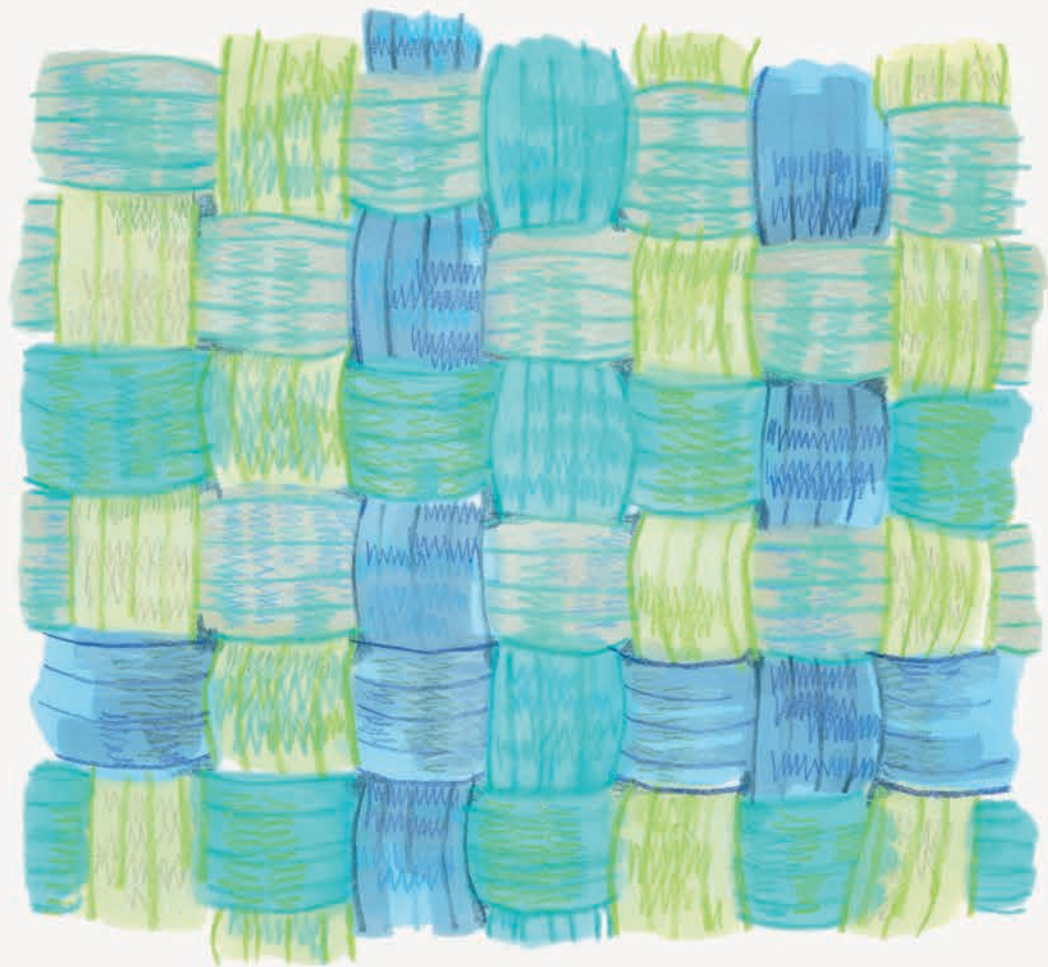


ease

BISANZIO



BERRY



Plump



CHAIN

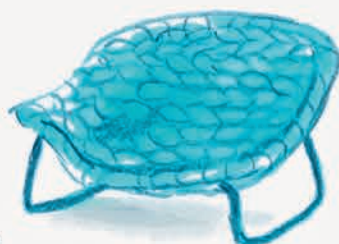
DONNA COSTANZA



2015



SHITO

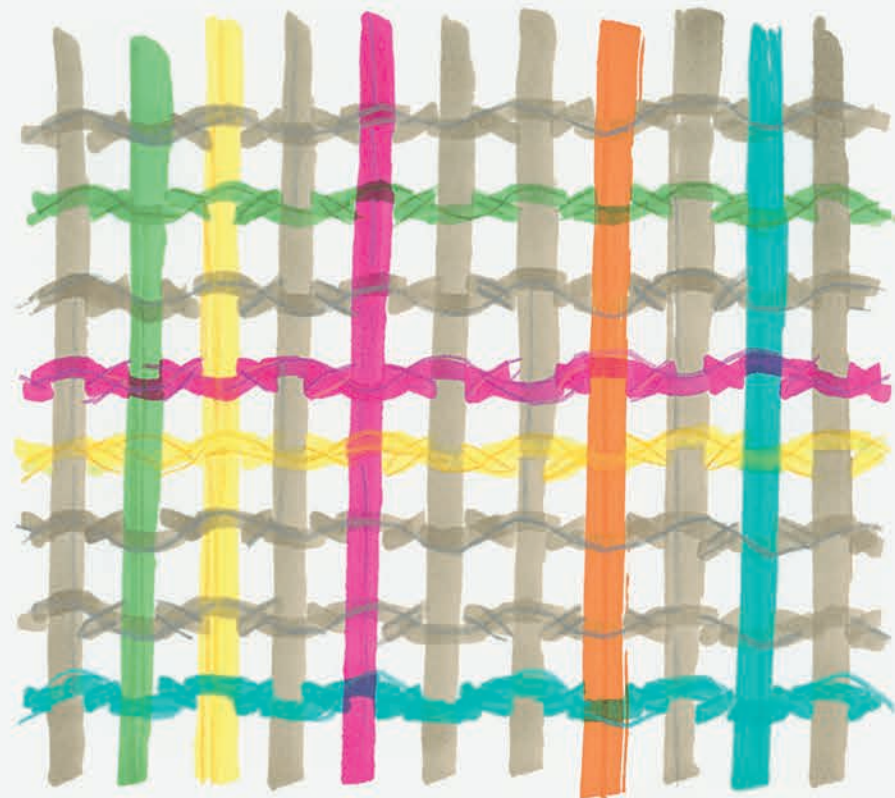


2016



KABA





KIMIA



Hopi

2017



AMABLE



SPEZIE

FARNIENTE



TRAME

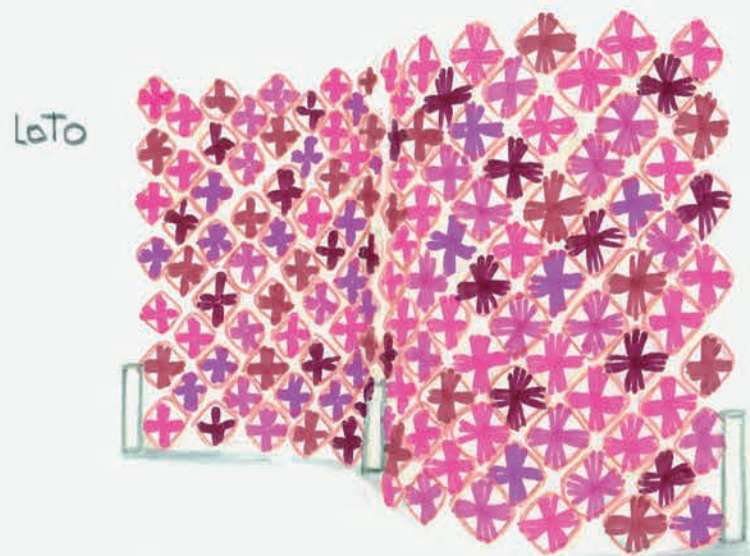
In vent'anni, attraverso un lavoro di sperimentazione costante, abbiamo individuato e selezionato per ROPE più di 50 colori solidi alla luce. Li abbiamo mescolati fra loro, studiandone gli effetti ottici, le associazioni, i contrasti. Da questa gamma di colori e dalla sua evoluzione nascono la coerenza e l'originalità cromatica che sono la cifra inconfondibile delle collezioni Paola Lenti. Da qui ha origine il modo inusuale di intendere e dare colore alle superfici, rendendole parte organica dello spazio domestico e naturale, grazie a una sorprendente attitudine all'armonia.

Over twenty years of constant experimentation, we identified and chose over fifty colour-fast shades for ROPE. We blended them in all sorts of ways and carefully examined the optical effects, associations and contrasts. The chromatic coherence and originality that bear the unmistakable stamp of a Paola Lenti collection arose from this range of colours and developments, which in turn triggered a new way of interpreting and applying colour to surfaces, making them an integral part of domestic and natural spaces thanks to a surprising ability to harmonise.

Con ROPE possiamo dire di avere definito l'identità della nostra azienda: gli oggetti che abbiamo progettato ora abitano in case, giardini, logge, terrazzi, imbarcazioni, in tutto il mondo.

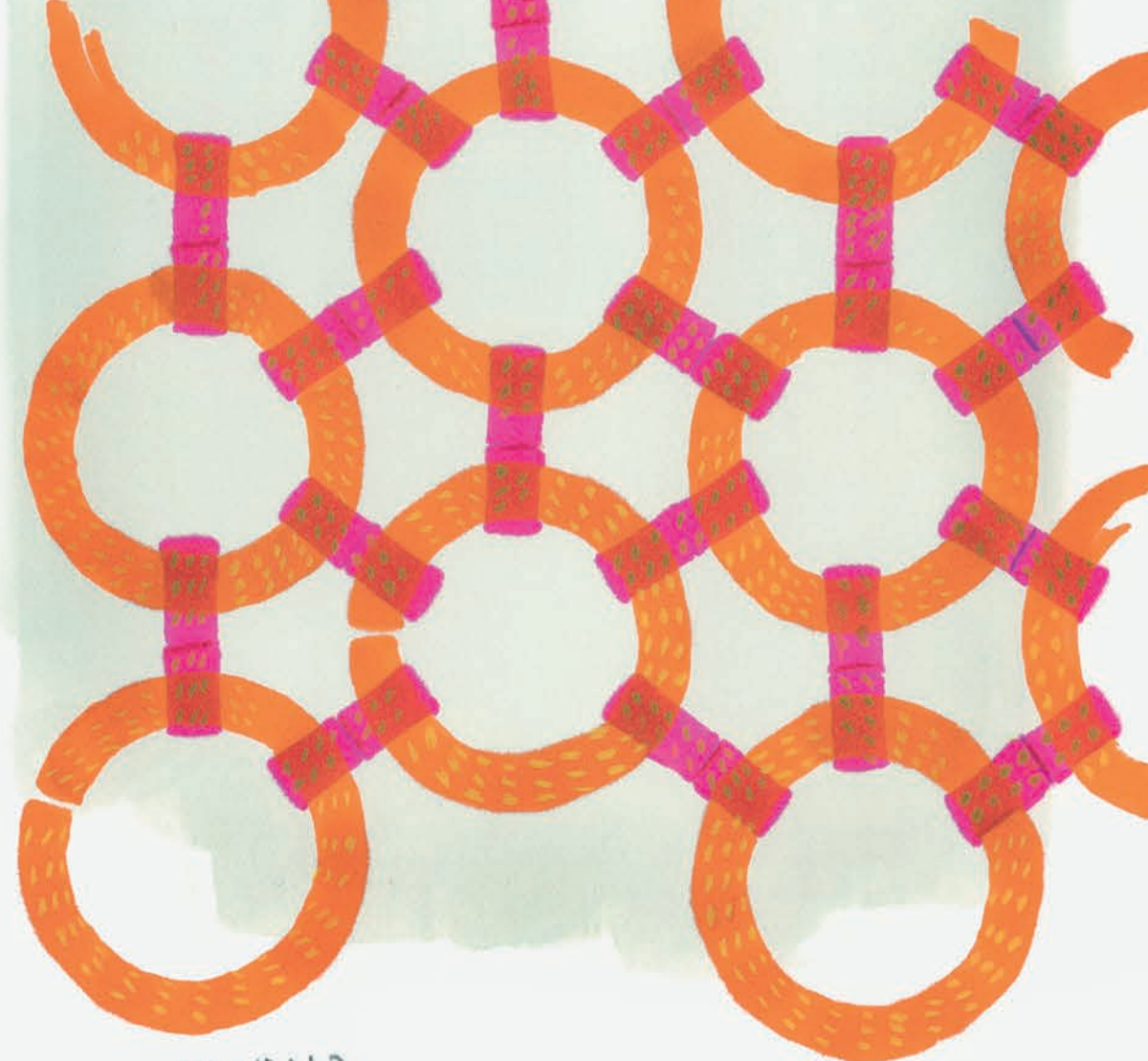
Vent'anni di prove, test e continua ricerca hanno permesso di migliorare l'aspetto e le performance tecniche di questo filato, come ad esempio longevità e resistenza. Oggi, la sua ultima evoluzione ha portato alla messa a punto del filato Twiggy e del tessuto strutturale brevettato Diade. Due materiali dalla vocazione ancora più innovativa per prestazioni e aspetto. È grazie anche a loro che ROPE prosegue la sua rivoluzione.

Our company's identity can be defined by ROPE: the pieces that we designed now reside in houses, gardens, loggias, terraces and boats all over the world. The look and technical performance, for example in terms of longevity and resistance, of this yarn have improved over twenty years of trials, tests and continuous research. Its most recent manifestation led to development of the Twiggy yarn and the patented mono-material structure Diade, both even more innovative in performance and appearance. Thanks in part to these products, ROPE continues to stride ahead.



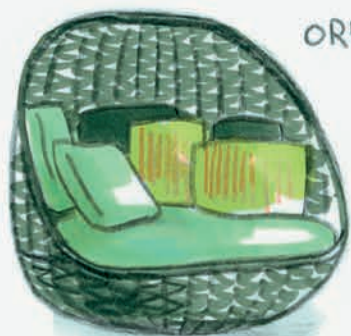
LoTo

2018



MANDALA

2019

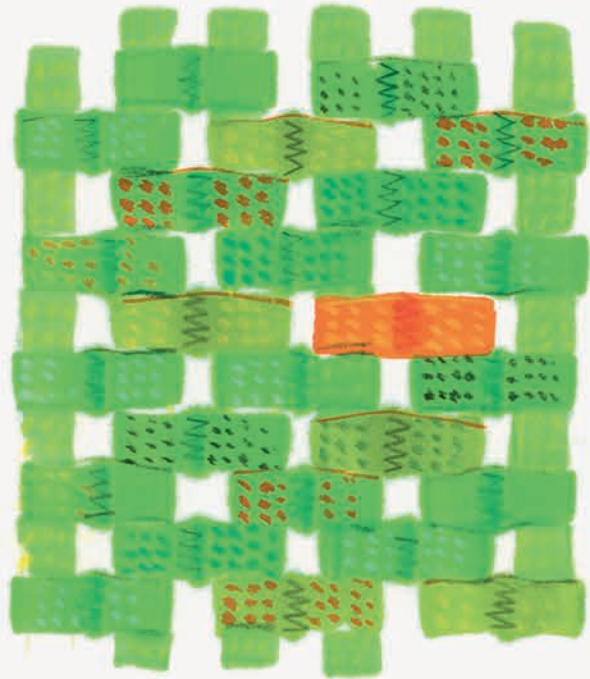


ORBITRY



TELAR





HAMMOCK



2020



JALI



TINDARI



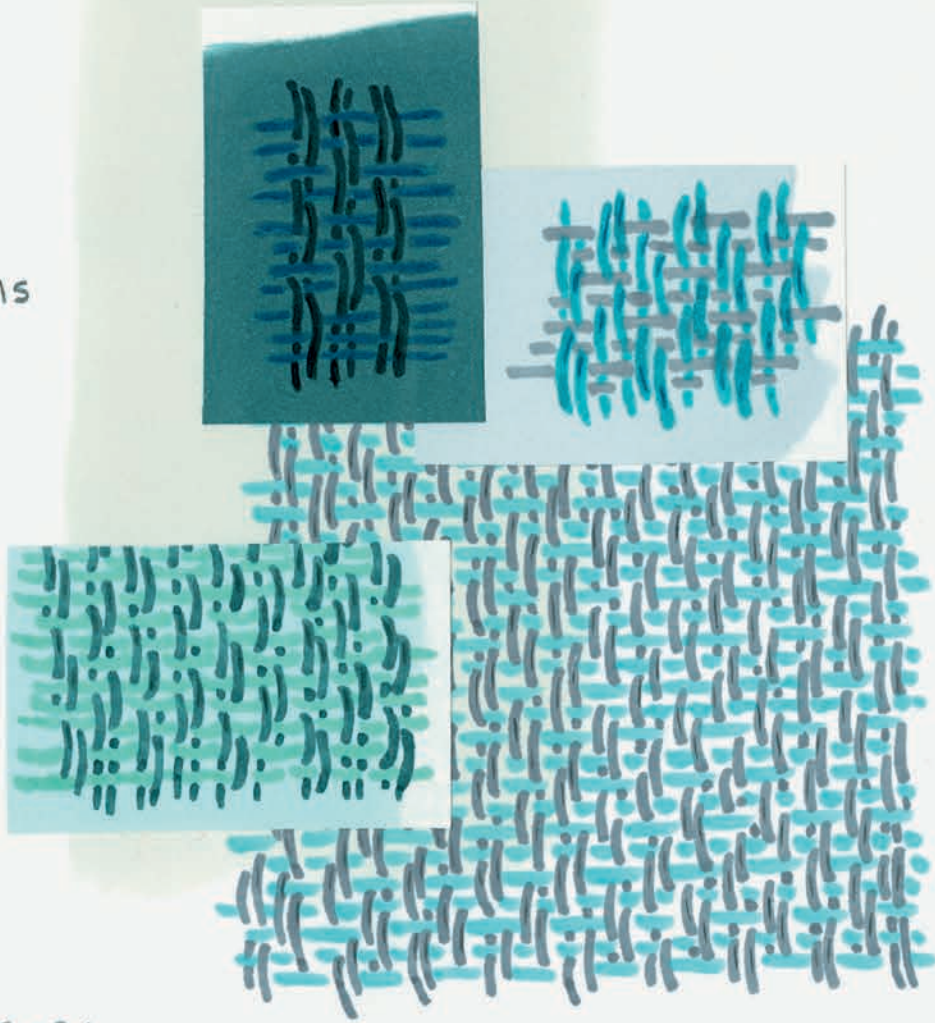
HAMMOCK



GIUNCO



MARIS



2021



FILO



2022

HARBOUR



CANVAS



JARDIN



Le immagini di questo Quaderno sono state affidate a Vessela Nikolova la cui ricerca visiva spazia dal campo della moda a quello del design, dalla fotografia al disegno dal vero, all'illustrazione. Queste immagini nascono dall'incontro fra il suo talento e i filati, le forme e i colori Paola Lenti, ritratti con pennarelli all'alcol e matite.

Responsibility for the illustrations in this notebook was given to Vessela Nikolova whose visual research encompasses the areas of fashion, design, photography, life drawing and illustration. The illustrations emerged from a combination of her talent and the Paola Lenti yarns, shapes and colours and were designed with permanent markers and pencils.

QUADERNI PAOLA LENTI #4
ROPE

PROGETTO E REALIZZAZIONE: CALAMUS
IMMAGINI: VESSELA NIKOLOVA
PROGETTO GRAFICO: ANNA MARTINUCCI
TESTI IN INGLESE: PATRICIA CROTTY
PRESTAMPA: RELIGHT DI PAOLA LUCENTE
STAMPA E CONFEZIONE: NAVA PRESS - MILANO
STAMPATO IN ITALIA NEL MESE DI SETTEMBRE 2022
SU CARTA FEDRIGONI ARENA SMOOTH WHITE 140g
© 2022 PAOLA LENTI - ALL RIGHTS RESERVED





**PAOLA
LENTI**

VIA PO 100 A - 20821 MEDA (MB) - ITALY
WWW.PAOLALENTI.IT