



Amaca realizzata completamente in tessuto.

**Struttura:** tessuto Trame in filato Rope, guarnizioni in maglia tubolare Chain Outdoor in colori abbinati al tessuto.

**Sistema di aggancio:** acciaio inox AISI 316.

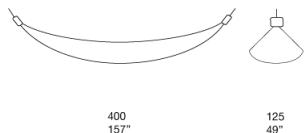
**Note:**

L'amaca Farniente può essere sospesa a un'apposita struttura in acciaio inox AISI 304, disponibile verniciata opaca o verniciata lucida (colori di riferimento: campionario legno Mano Lucida), completa di piastre di base per il fissaggio a superfici portanti.

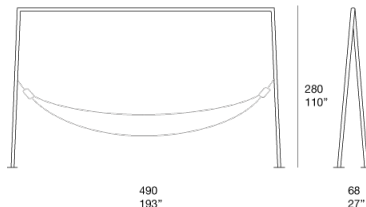
È consigliato l'uso di cuscini d'appoggio.

È consigliato l'uso di un Winter Set di protezione.

B132AE

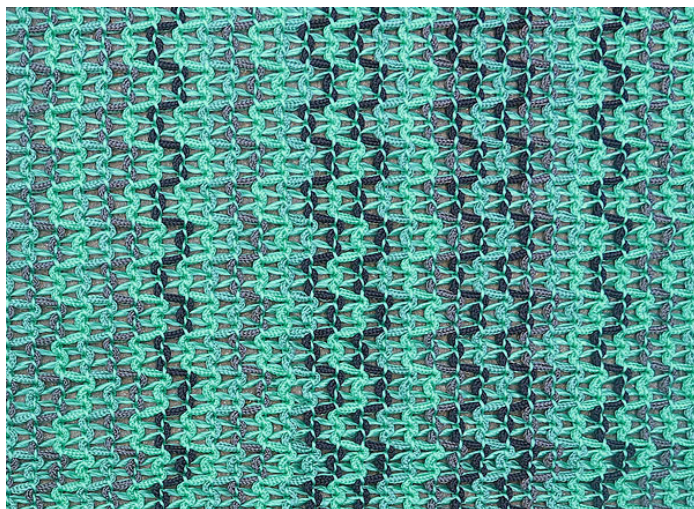


B132SE

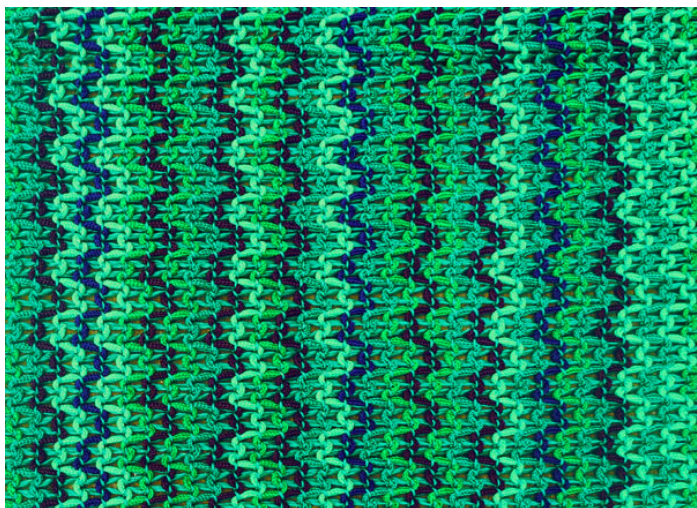




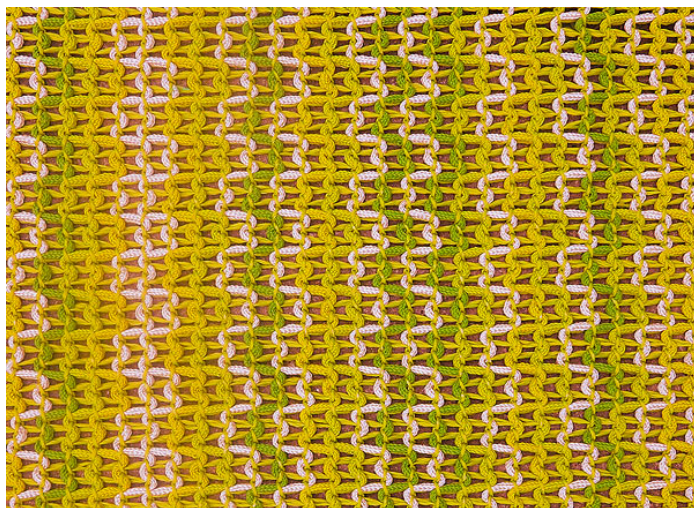
TAM644



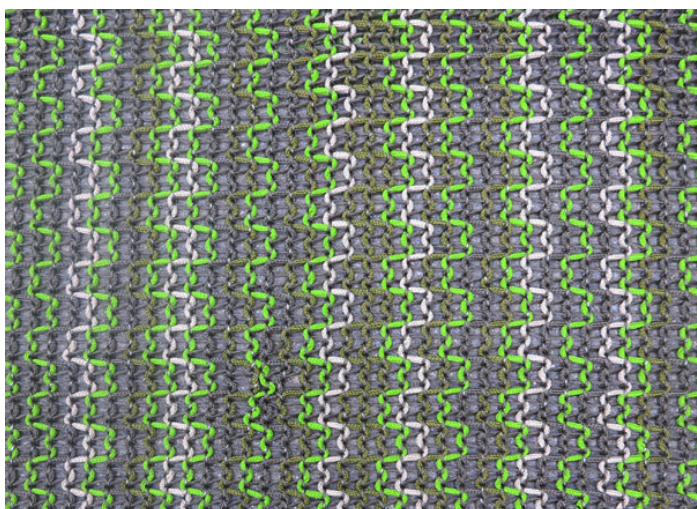
TAM654



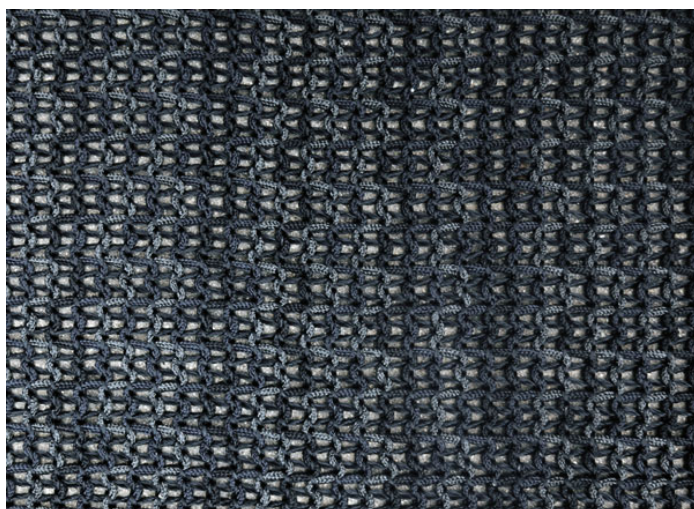
TAM627



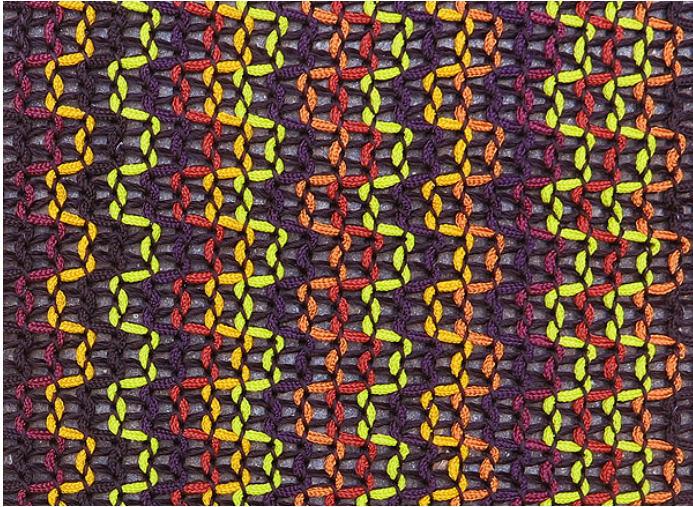
TAM629



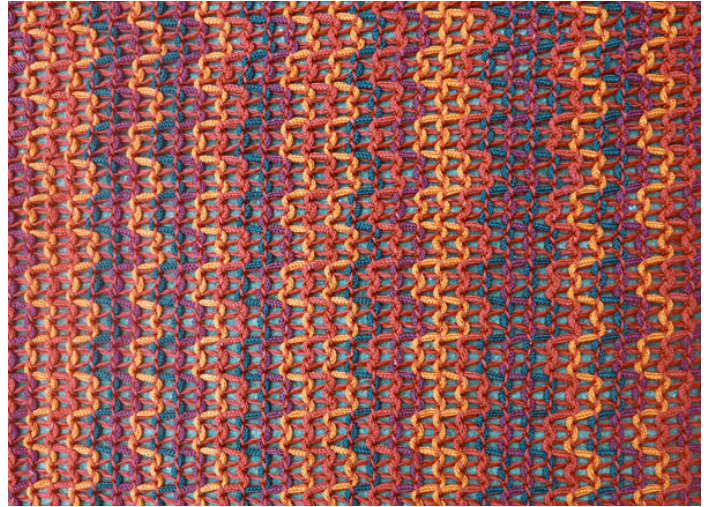
TAM616



TAM638



TAM599



TAM603